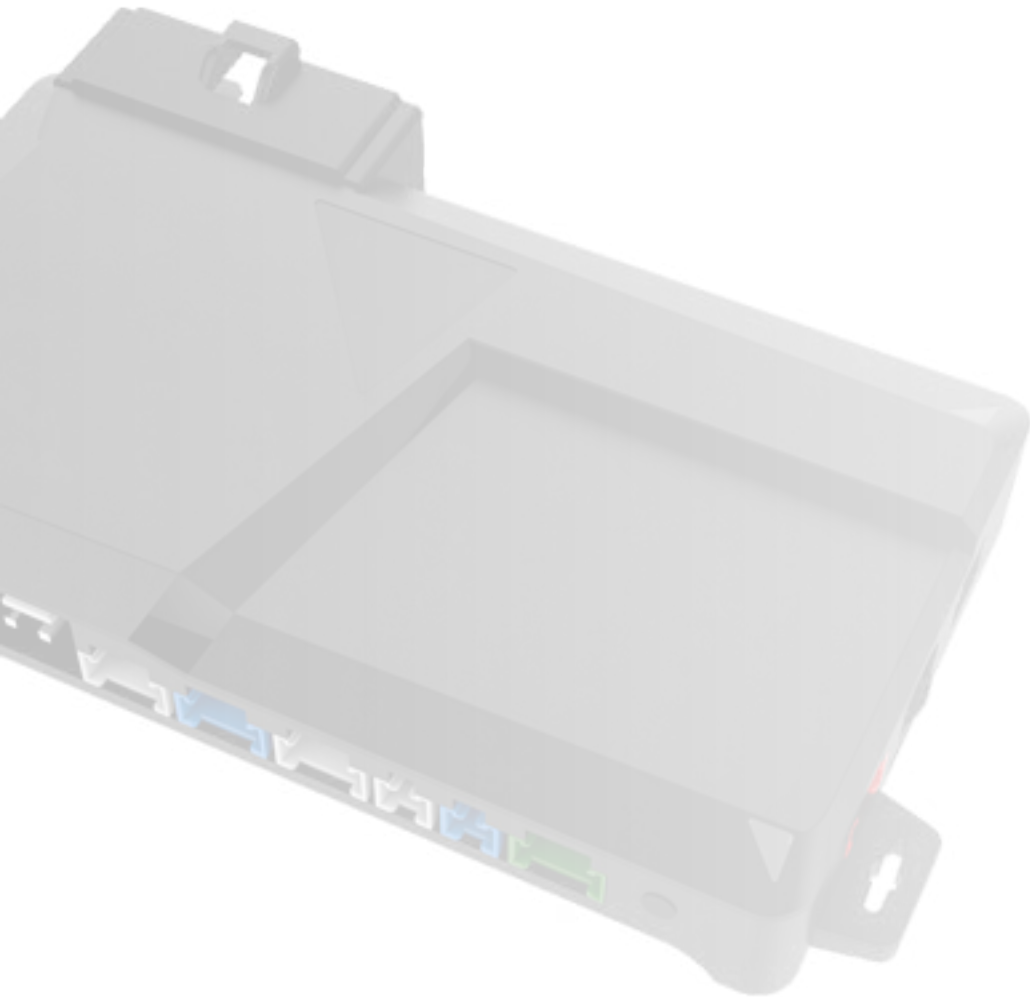




PRODUCT GUIDE

DC3



DOCUMENT NUMBER

REVISION DATE
20220113

TERMS OF USE

Automotive Data Solutions Inc. ("ADS") products are strictly intended for installation by Certified Technicians who are employed by a registered business specialized in the installation of automotive aftermarket electronics products. Prior to beginning installation of an ADS product in a vehicle, it is the Certified Technician's responsibility to review the most current Product Guide, Install Guide and vehicle-specific notes available in Weblink®. ADS is not responsible for any damages whatsoever, including but not limited to any consequential damages, incidental damages, damages for loss of time, loss of earnings, loss of profit, commercial loss, loss of economic opportunity and the like that may or may not have resulted from the use, misuse, improper installation or operation of its products. ADS reserves itself the right to suspend any Weblink® account without notice and decline to offer technical support to non-Certified Technicians, non-compliant Certified Technicians or end users.

WELCOME

Congratulations on the purchase of your DC3 solution. You are now a few simple steps away from enjoying your new remote starter unit with enhanced features.

Before starting your installation, please ensure that your DC3 module is programmed with the correct firmware for your vehicle and that you carefully review the install guide.

TABLE OF CONTENTS

DC3 Product Guide

Module Layout	3
Tach Programming Procedure	4
Module Diagnostics	5-6
Remote Starter Error Codes	7
Alarm Error Codes	8
Module Reset Procedure	9
Installation Checklist	10-11
Compatible Accessories	12-13
Remote Programming Procedure	14
Valet Mode Programming Procedure	15

NEED HELP?

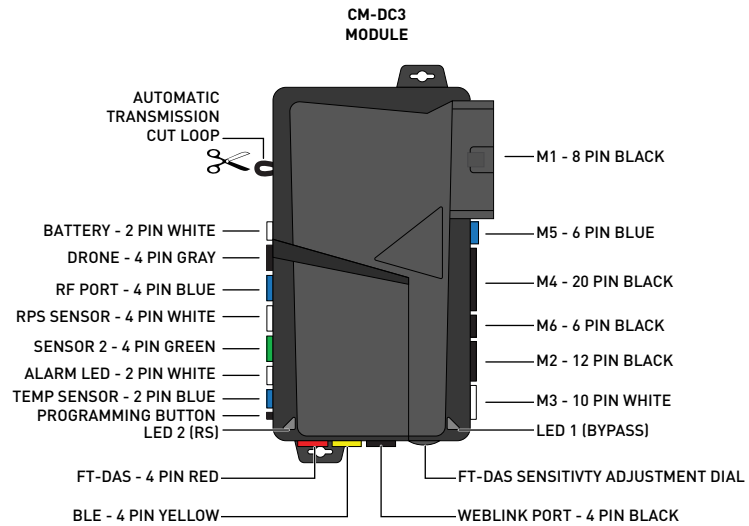
 **1 866 427-2999**

 **support@idatalink.com**

 **idatalink.com/support**
www.12voltdata.com/forum
www.facebook.com/groups/idatatech

MODULE CONNECTORS

CONNECTOR PINOUT



Connector	Pinout	Function
M1	2 1	01 ORANGE - ACCESSORY (+)
	4 3	02 RED - POWER (30A)
	6 5	03 PURPLE - STARTER (+)
	8 7	04 PINK/WHITE - PROG. RELAY #4 - IGNITION 2 (+) [DEFAULT]
		05 PINK - IGNITION (+)
		06 WHITE - PROG. RELAY #5 (10A) - PARKING LIGHTS (+) [DEFAULT]
		07 RED - POWER (30A)
		08 BLACK - GROUND
M2	2 1	01 GREEN•BLACK DOT - LOCK (-) OUTPUT
	4 3	02 BLUE•BLACK DOT - UNLOCK (-) OUTPUT
	6 5	03 RED/WHITE•BLACK DOT - TRUNK RELEASE (-) OUTPUT
	8 7	04 GREEN/WHITE•BLACK DOT - ARM (-) OUTPUT
	10 9	05 GREEN/BLACK•BLACK DOT - DISARM (-) OUTPUT
	12 11	06 BLUE/WHITE•BLACK DOT - GWR (-) OUTPUT
		07 BROWN•BLACK DOT - SIREN (+) OUTPUT
		08 WHITE/PURPLE•BLACK DOT - POC 1 - 2ND UNLOCK OTHER DOORS (-) OUTPUT
		09 PURPLE/BLACK•BLACK DOT - POC 2 - RAP SHUTDOWN (-) OUTPUT
		10 WHITE/BLACK•BLACK DOT - POC 3 - HORN (-) OUTPUT
		11 BROWN/BLACK•BLACK DOT - POC 4 - STARTER KILL (-) OUTPUT
		12 WHITE•BLACK DOT - PARKING LIGHTS (-) OUTPUT
M3	2 1	01 BROWN•SILVER DOT - BRAKE (+) INPUT
	4 3	02 BLACK/WHITE•SILVER DOT - E-BRAKE (-) INPUT
	6 5	03 PURPLE•SILVER DOT - DOOR (+) INPUT
	8 7	04 GREEN•SILVER DOT - DOOR (-) INPUT
	10 9	05 PURPLE/WHITE•SILVER DOT - TACH (-) INPUT
		06 WHITE/BLUE•SILVER DOT - X-TRIGGER (-) INPUT
		07 GRAY•SILVER DOT - HOOD (-) INPUT
		08 BLUE•SILVER DOT - TRUNK (-) INPUT
		09 GRAY/BLACK•SILVER DOT - GLOW PLUG (+) INPUT
		10 TAN•SILVER DOT - EXT ALARM SENSOR (-) INPUT
M4	2 1	FUNCTIONS DEFINED BY FIRMWARE
	4 3	
	6 5	
	8 7	
	10 9	
	12 11	
	14 13	
	16 15	
	18 17	
	20 19	
M5	1 2	FUNCTIONS DEFINED BY FIRMWARE
	3 4	
	5 6	
M6	1 2	FUNCTIONS DEFINED BY FIRMWARE
	3 4	
	5 6	

01



START vehicle for 15 seconds.

02



Press and hold the brake pedal.

03



Press and release the module's programming button. (OR if the remotes are already programmed to the vehicle, press and hold the start button of the remote for 2.5 seconds.)

04



Wait, LED 2 will flash GREEN. (See the Module Diagnostics page)

05

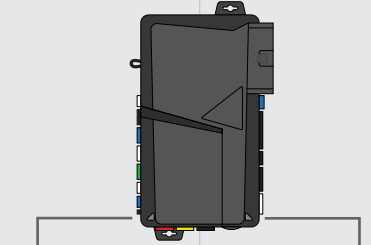


Release the brake pedal.

06

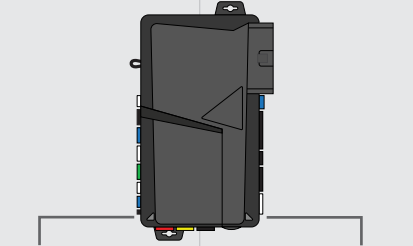


Module Programming Procedure completed.

MODULE STATUS DURING:			LED STATUS	DIAGNOSTIC
	LED 2*	LED 1**		
MODULE PROGRAMMING		●	Flashing RED	Missing/wrong information from firmware or vehicle. See firmware specific diagnostics, or contact technical support.
		●	Solid RED	Module waiting for more vehicle information. Programming incomplete.
		●	Flashing GREEN	Additional steps required to complete programming. Refer to install guide.
		●	Solid GREEN then OFF	Module programming completed successfully.
		○	OFF	No activity or module already programmed.
	●		1 RED flash	No firmware on module. Connect to Weblink and flash device.
	●●		2 ORANGE flashes	Contact technical support.
	●●●		3 ORANGE flashes	Module programming not completed.
	●●●●		4 ORANGE flashes	Contact technical support.
	●●●●●		7 ORANGE flashes	Contact technical support.
	●●●●●●		8 ORANGE flashes	Loop not cut. Ensure loop is cut for automatic transmission. Reset and re-learn.
●●●●●●●		9 ORANGE flashes	Loop not cut. Ensure loop is cut for automatic transmission. Reset and re-learn.	
●●●●●●●●		10 ORANGE flashes	Boot loader update failed. Contact technical support.	
●●●●●●●●●		11 ORANGE flashes	T-harness detection does not match install type selection in Weblink.	
TACH PROGRAMMING		●	Solid RED	Tach learn in progress.
		●	1 GREEN flash	Tach signal programmed in analog.
		●●	2 GREEN flashes	Tach signal programmed in data.
		●●●	3 RED flashes	No tach signal detected
		●●●●	4 RED flashes	System is in valet mode. Turn off valet mode to program tach.
		●●●●●	6 RED flashes	Engine sensing set for 'assumed start'. No tach programming required.
		●●●●●●	7 ORANGE flashes	Engine sensing not configured properly. Contact technical support.

* LED 2 (RS) displays generic diagnostic codes specific to the remote start module. Orange LED flashes may appear red.
 ** LED 1 (Bypass) displays diagnostic codes specific to the firmware loaded on the module.
 Visit the programming diagnostics page for more information.



MODULE STATUS DURING:			LED STATUS	DIAGNOSTIC
	LED 2*	LED 1**		
REMOTE START SEQUENCE	●		Flashing rapid RED	Remote start shutdown sequence.
	●		Flashing slow RED	Remote start shutdown error code. Contact technical support.
	●		Solid RED	Remote start crank delay.
	●		Flashing rapid GREEN	Remote start cycle in progress. Working correctly.
	●		1 GREEN flash	Remote start initiated successfully.
	●		3 GREEN flashes	Idle mode cycle in progress.
	●		4 GREEN flashes	Turbo mode cycle in progress.
TRANSMITTER PROGRAMMING		●	Flashing GREEN	Remote start cycle in progress. Displays vehicle platform during runtime.
		●	Rapid GREEN flashing	Secure takeover initiated. Waiting to complete takeover after brake press.
	●		Solid RED	Remote programming in progress, waiting for remote pairing.
	●		1 GREEN flash	Remote programmed.
	●		4 RED flashes	Shutdown remote starter before attempting remote programming.
	●		5 RED flashes	Engine must be off before attempting remote programming.
		●	6 RED flashes	System must be unlocked/disarmed before attempting remote programming.
		●	7 RED flashes	Module must be learned to the vehicle before attempting remote programming.

* LED 2 (RS) displays generic diagnostic codes specific to the remote start module. Orange LED flashes may appear red.

** LED 1 (Bypass) displays diagnostic codes specific to the firmware loaded on the module.

Visit the programming diagnostics page for more information.



REMOTE STARTER ERROR CODES: NOTES	PARKING LIGHT FLASHES	DIAGNOSTIC
<p>I WARNING: The following applies only when the parking lights are connected and supported by the system.</p> <p>II After a remote starter failure, the parking lights will flash three [3x] times followed by the error code. See table.</p>	3 + 1	Tach is not programmed OR engine is already running.
	3 + 2	Key is in ignition ON position.
	3 + 3	Door is open.
	3 + 4	Trunk is open.
	3 + 5	Foot brake is ON.
	3 + 6	Hood is open.
	3 + 7	Loop is not cut.
	3 + 8	No tach detected.
	3 + 9	Vehicle movement detected (VSS).
	3 + 10	System is in Valet Mode.
	3 + 11	CAN communication failure
	3 + 12	RS not synchronized. Start vehicle with OEM key for 15 sec before trying a new RS sequence.
	3 + 13	Bypass problem.
	3 + 14	Idle mode or takeover is not available on this vehicle.
	3 + 15	Overheat protection.

REMOTE STARTER SHUTDOWN ERROR CODES: NOTES	PARKING LIGHT FLASHES	DIAGNOSTIC
<p>I WARNING: The following applies only when the parking lights are connected and supported by the system.</p> <p>II If the engine shuts down after a remote starter sequence use the query command from a compatible aftermarket remote to display the shutdown error code. The parking lights will flash four [4x] times followed by the error code. See table.</p>	4 + 1	Engine tach signal was lost.
	4 + 2	Emergency brake signal was lost.
	4 + 3	Foot brake ON detected.
	4 + 4	Hood open detected.
	4 + 5	Tach over rev detected.
	4 + 6	Glow plug timeout error.
	4 + 7	Vehicle movement detected (VSS).
	4 + 8	Check engine light ON.
	4 + 9	Low fuel level.
	4 + 10	Open door detected.
	4 + 11	CAN communication failure during RS sequence.
	4 + 12	RS not synchronized. Start vehicle with OEM key for 15 sec before trying a new RS sequence.
	4 + 13	Bypass problem.
	4 + 14	Idle mode or takeover is not available on this vehicle.
	4 + 15	Overheat protection.

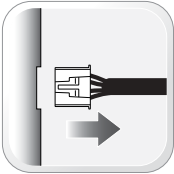
ALARM ERROR CODES: NOTES	PARKING LIGHT FLASHES	ANTENNA LED FLASHES	DIAGNOSTIC
I WARNING: The following applies only when the parking lights are connected and supported by the system.	5 + 1	1	Shock sensor triggered
	5 + 2	2	Door open
	5 + 3	3	Trunk open
II If the alarm has been triggered, the parking lights will flash five [5x] times followed by the alarm activation event.	5 + 4	4	Hood open
	5 + 5	5	Zone 2 input triggered
	5 + 6	6	Foot brake ON
III The alarm event code is also displayed in a repeating pattern on the antenna's LED when the alarm is triggered, until unlock is received.	5 + 7	7	Ignition ON
	5 + 8	8	Motion detected
	5 + 9	9	Tilt detected
	5 + 10	10	Warn away input triggered

>>



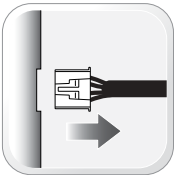
The following procedure resets the module programming to the vehicle. It does not reset any settings configured online.

01



Disconnect all connectors from module except the M1 BLACK 8-pin connector and the M4 BLACK 20-pin connector.

02



Disconnect the M1 BLACK 8-pin connector and the M4 BLACK 20-pin connector.

03



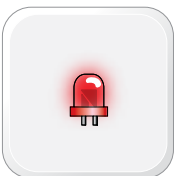
PRESS AND HOLD the module's programming button while connecting the M1 BLACK 8-pin connector and the M4 BLACK 20-pin connector.

04



Wait, LED 1 will flash RED. RELEASE programming button.

05



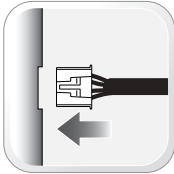
LED 1 will turn RED for 2 seconds.

06



Module RESET completed.

07



Reconnect all connectors.

08



Repeat programming procedure.

>>



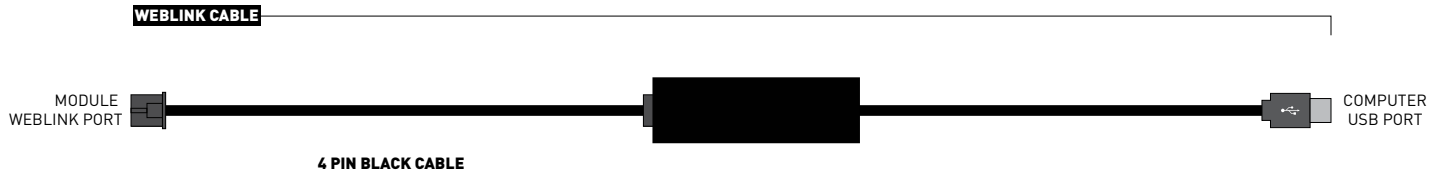
Failure to follow procedure may result with a DTC or a CHECK ENGINE error message.

CHECKLIST - WITH AFTERMARKET KEYFOB

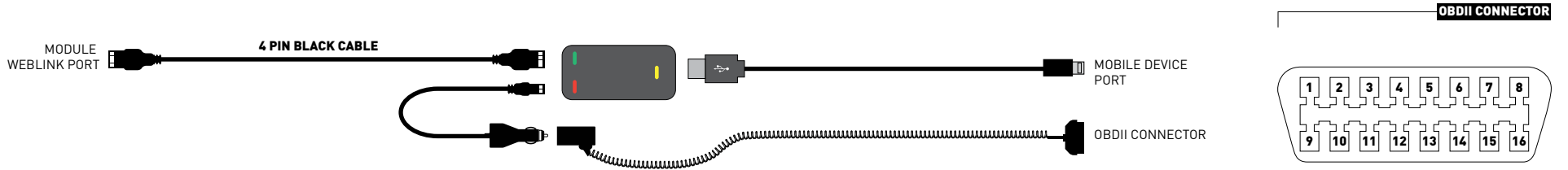
1	WARNING: Vehicle engine will start many times. Test in a well ventilated area.	9	Press the START/STOP button once [1x] on the aftermarket keyfob to shut down vehicle.
2	Close all vehicle doors, hood and trunk.		Question 7: Does the vehicle shut down?
3	Press the LOCK button once [1x] on the aftermarket keyfob.	<input type="checkbox"/>	YES: Go to next step.
	Question 1: Do the doors lock?	<input type="checkbox"/>	NO: Repeat step. If problem persists, press the brake pedal once [1x] to shut down the vehicle and call technical support.
<input type="checkbox"/>	YES: Go to next step.	10	RAP and auto light shutdown test
<input type="checkbox"/>	NO: Verify the remote programming, the RF connections and the wired door lock/unlock connections as illustrated in the wiring diagram, if applicable. Repeat the test and call technical support, if the problem persists.		Question 8: Did the radio, interior controls and headlights turn off within 60 seconds after remote start shutdown?
4	Press the UNLOCK button once [1x] on the aftermarket keyfob.	<input type="checkbox"/>	YES: Go to next step.
	Question 2: Do the doors unlock?	<input type="checkbox"/>	NO: Verify the RAP SHUTDOWN connections as illustrated in the wiring diagram. Repeat the test and call technical support if the problem persists.
<input type="checkbox"/>	YES: Go to next step.	11	Open hood.
<input type="checkbox"/>	NO: Verify the remote programming, the RF connections and the wired door lock/unlock connections as illustrated in the wiring diagram, if applicable. Repeat the test and call technical support, if the problem persists.	12	If not already installed, affix the mandatory orange warning sticker under the hood and proceed to next step.
5	Press the TRUNK release button once [1x] on the aftermarket keyfob if supported.	13	Press the START/STOP button once [1x] on the aftermarket keyfob to remote start vehicle.
	Question 3: Does the trunk or hatch open/unlock?		Question 9: Does the vehicle remote start?
<input type="checkbox"/>	YES: Close trunk or hatch and go to next step.	<input type="checkbox"/>	YES: The vehicle is not equipped with a factory hood pin. Install a mandatory aftermarket hood switch, then repeat the test.
<input type="checkbox"/>	NO: Verify the remote programming, the RF connections and the wired trunk/hatch connections as illustrated in the wiring diagram, if applicable. Repeat the test and call technical support, if the problem persists.	<input type="checkbox"/>	NO: Go to next step.
6	Press the AUX 1 button once [1x] on the aftermarket keyfob if supported.	14	Close hood.
	Question 4: Does the driver side sliding door open?	15	Enter vehicle and close the doors.
<input type="checkbox"/>	YES: Press the AUX 1 button once [1x] to close the driver sliding door and go to next step.	16	Press the START/STOP button once [1x] on the aftermarket keyfob to remote start vehicle.
<input type="checkbox"/>	NO: Verify the remote programming and the RF connections. Repeat the test and call technical support, if the problem persists.	17	Wait for the vehicle to start.
7	Press the AUX 2 button once [1x] on the aftermarket keyfob if supported.	18	Press brake pedal.
	Question 5: Does the passenger side sliding door open?		Question 10: Does the vehicle shut down?
<input type="checkbox"/>	YES: Press the AUX 2 button once [1x] to close the passenger sliding door and go to next step.	<input type="checkbox"/>	YES: Go to next step.
<input type="checkbox"/>	NO: Verify the remote programming and the RF connections. Repeat the test and call technical support, if the problem persists.	<input type="checkbox"/>	NO: The module does NOT detect the brake pedal signal. Press the START/STOP button once [1x] on the aftermarket keyfob to shut down vehicle, check connection as illustrated in the wiring diagram, if applicable, and call technical support.
8	Press the START/STOP button once [1x] on the aftermarket keyfob to remote start vehicle.	19	Exit vehicle.
	Question 6: Does the vehicle remote start?	20	Installation checklist completed.
<input type="checkbox"/>	YES: Go to next step.		
<input type="checkbox"/>	NO: Verify the remote programming, the RF connections and check the remote start error codes. Repeat the test and call technical support, if the problem persists.		

CHECKLIST - WITH OEM KEYFOB	
1	WARNING: Vehicle engine will start many times. Test in a well ventilated area.
2	Close all vehicle doors, hood and trunk.
3	Press LOCK button three times [3x] rapidly on the OEM keyfob to remote start vehicle.
	Question 1: Does the vehicle remote start?
<input type="checkbox"/>	YES: Go to next step.
<input type="checkbox"/>	NO: The module doesn't detect OEM remote lock button from the vehicle communication network. Check all connections, repeat the test and call technical support, if the problem persists.
4	Press LOCK button three times [3x] rapidly on the OEM keyfob to shut down vehicle.
	Question 2: Does the vehicle shut down?
<input type="checkbox"/>	YES: Go to next step.
<input type="checkbox"/>	NO: Repeat step. If the problem persists, press on the brake pedal once [1x] to shut down the vehicle and call technical support.
5	RAP Shutdown test
	Question 3: Did the radio, interior controls, and headlights turn off within 60 seconds after remote start shutdown?
<input type="checkbox"/>	YES: Go to next step.
<input type="checkbox"/>	NO: Verify the RAP SHUTDOWN connections as illustrated in the wiring diagram. Repeat the test and call technical support, if the problem persists.
6	Open hood.
7	If not already installed, affix the mandatory orange warning sticker under the hood and proceed to next step.
8	Press LOCK button three times [3x] rapidly on the OEM keyfob to remote start vehicle.
	Question 4: Does the vehicle remote start?
<input type="checkbox"/>	YES: The vehicle is not equipped with a factory hood pin. Install a mandatory aftermarket hood switch, then repeat the test.
<input type="checkbox"/>	NO: Go to next step.
9	Close hood.
10	Enter vehicle and close the doors.
11	Press LOCK button three times [3x] rapidly on the OEM keyfob to remote start vehicle.
12	Wait for the vehicle to start.
13	Press brake pedal.
	Question 5: Does the vehicle shut down?
<input type="checkbox"/>	YES: Go to next step.
<input type="checkbox"/>	NO: The module does NOT detect the brake pedal signal. Press LOCK button three times [3x] rapidly on the OEM keyfob to shut down, check the brake connection as illustrated in the wiring diagram, if applicable, and call technical support.
14	Exit vehicle.
15	Installation checklist completed.

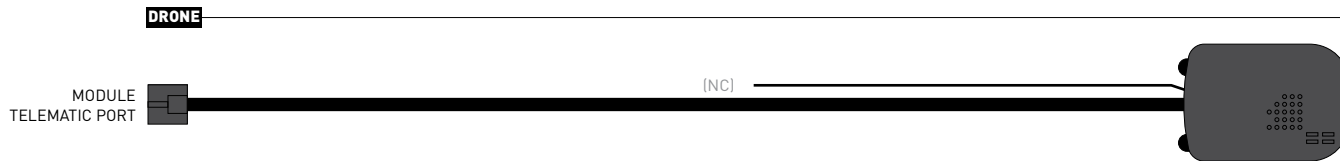
WEBLINK CABLE (required accessory sold separately)



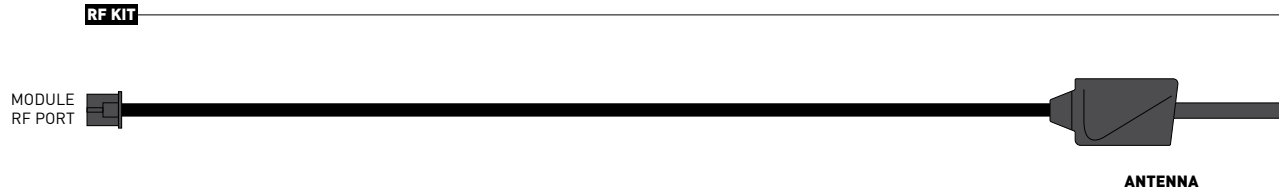
WEBLINK MOBILE (accessory sold separately)



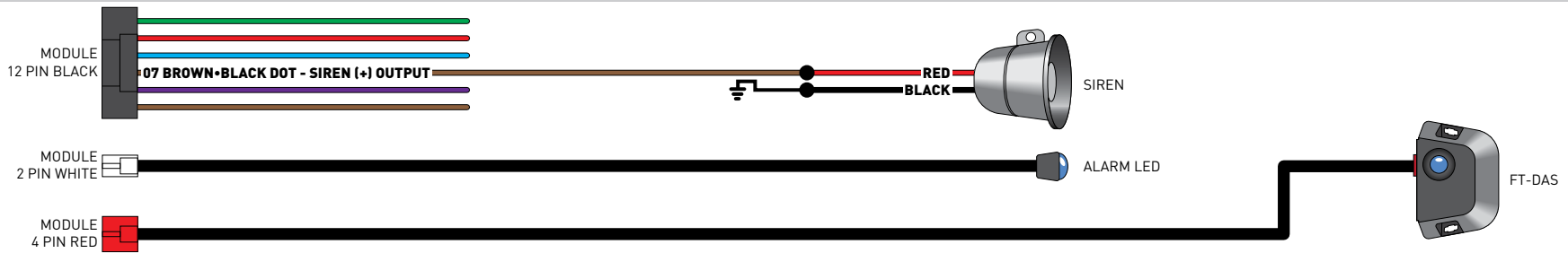
TELEMATIC KIT (accessory sold separately)



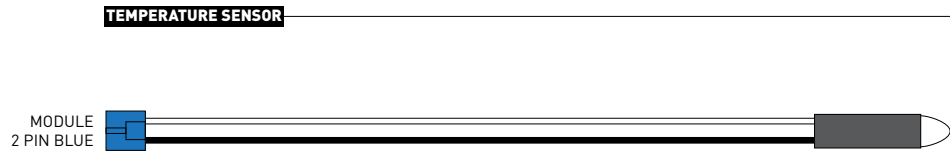
RF KIT (accessories sold separately)



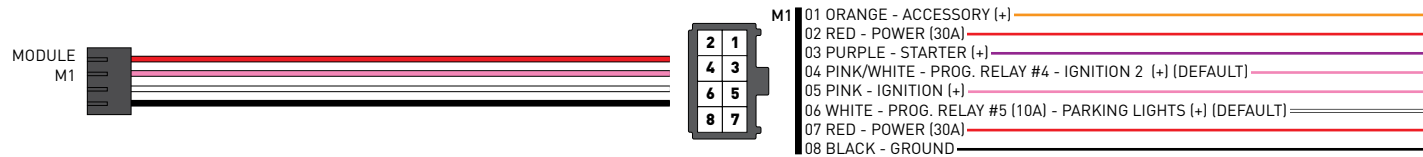
ALARM KIT (accessories sold separately)



TEMPERATURE SENSOR (accessories sold separately)



ANALOG HARNESS FT-HRN-DC3-PWR (sold separately)



>>



WARNING: Program aftermarket remotes before usage. A maximum of four [4x] aftermarket remotes per system.

01



Time restriction. Complete next step within 7 seconds.

02



Cycle ignition ON five times [5x OFF/ON] rapidly.

03



Parking Light will flash once [1x].

04



Time restriction. Complete next step within 5 seconds from previous step.

05



Press once [1x] on LOCK button of aftermarket remote.

06



Parking Light will flash once [1x].

>>



To program additional remotes: repeat steps 4 to 6 using each additional remote.

07



Wait, Parking Light will flash twice [2x].

08



Turn ignition to OFF position.

09



Aftermarket Remote Programming Procedure completed.

>>



NOTE: In Valet Mode, the Remote starter is not functional. Keyless entry, Lock and Unlock will remain functional. See RF kit user manual for alternate valet mode programming.

01



Time restriction. Complete next step within 7 seconds.

02



Cycle ignition ON twice [2x OFF/ON] rapidly.

03



Press and release the BRAKE pedal three times [3x].

04



Parking Light will flash once [1x] then will flash twice [2x].

05



Set ignition to OFF position.

06



Valet Mode Programming Procedure completed.

>>



To exit valet mode: repeat steps 1 to 5.