

# BLADE

SERIES

Automotive Data Solutions Inc.

## INSTALL GUIDE

### BLADE-AL(DL)-VO2-EN

# VO2

**AVAILABLE FOR: ADS-BLADE AL**

*Rev. Date: March 02, 2016*

*Doc. No.: ##27127##*

U.S. PATENT NO. 8,856,780

PLEASE VISIT [WWW.IDATALINK.COM](http://WWW.IDATALINK.COM) FOR COMPLETE PRODUCT DETAILS

The brand names and logos found in this guide are property of their respective owners. Automotive Data Solutions Inc. © 2016



**VOLVO**

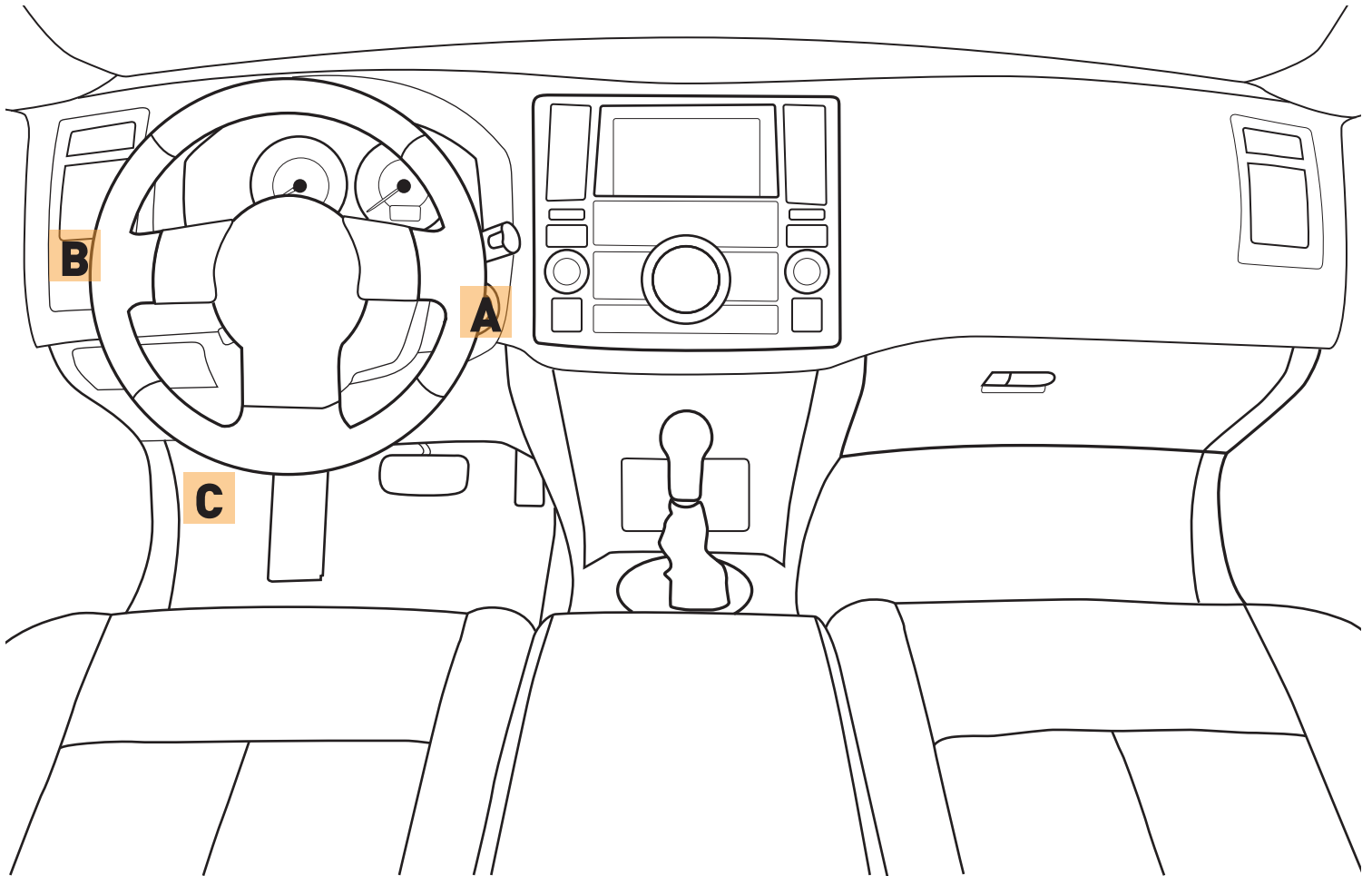
**NOTICE:** The manufacturer will accept no responsibility for any electrical damage resulting from improper installation of this product, be that either damage to the vehicle itself or to the installed device. This device must be installed by a certified technician. This guide has been written for properly trained technicians; a certain level of skill & knowledge is therefore assumed. Please review the Installation Guide carefully before beginning any work.

## INSTALL TYPE SELECTION

MAKE	MODEL	YEAR	INSTALL TYPE	FEATURES												
				DATA IMMOBILIZER BYPASS	DISARM OEM ALARM	DOOR LOCK	DOOR UNLOCK	TRUNK/HATCH RELEASE	POWER LIFTGATE	RETRACTABLE MIRROR CTRL	SECURE TAKE OVER	DOOR STATUS OUTPUT	TRUNK STATUS OUTPUT	HOOD STATUS OUTPUT*	BRAKE PEDAL STATUS OUTPUT	E-BRAKE OUTPUT
LAND ROVER	LR2 PTS	07-12	2	•	•	•	•			•	•	•	•	•	•	•
VOLVO	S80 PTS	07-11	1	•	•	•	•	•		•	•	•	•	•	•	•
	V70 PTS	08-11	1	•	•	•	•		•	•	•	•	•	•	•	•
	XC60 PTS Motorized keyport	10-11	1	•	•	•	•		•	•	•	•	•	•	•	•
	XC70 PTS	08-11	1	•	•	•	•		•	•	•	•	•	•	•	•

\*Available only if vehicle is equipped with factory hood switch.

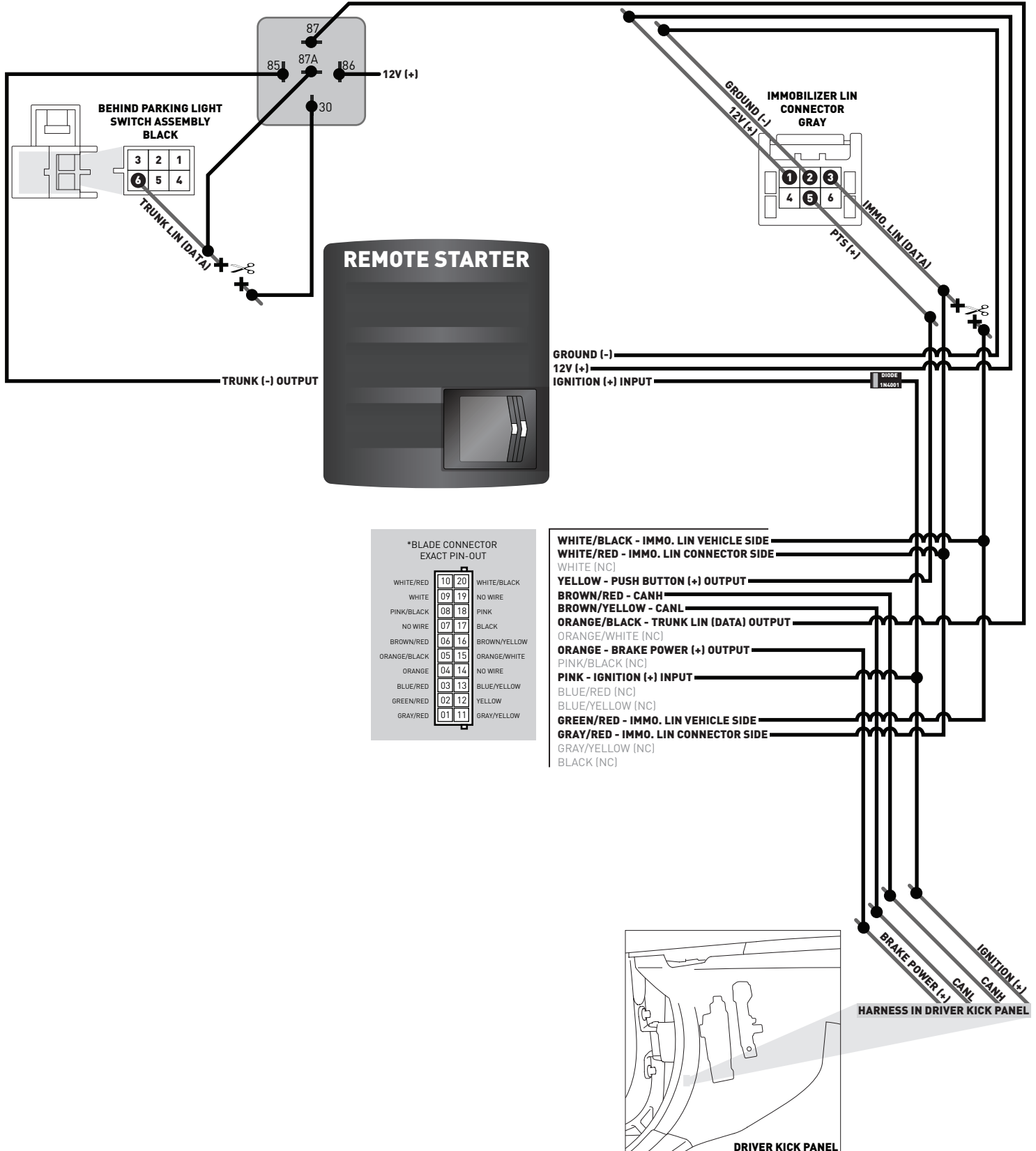
## COMPONENT LOCATOR



### TYPE 1 - WIRE CROSS REFERENCE CHART - 1 OF 1

MAKE	MODEL	YEAR	WIRE DESCRIPTION	CONNECTOR NAME	CONNECTOR COLOR	CONNECTOR TYPE	POSITION	WIRE COLOR	POLARITY	MODULE LOCATION	COMPONENT LOCATOR
VOLVO	XC70 PTS	08-11	12V	~	Gray	6 pin	1	Red	(+)	Immobiliser	A
			Ground	~	Gray	6 pin	2	Black	(-)	Immobiliser	A
			PTS	~	Gray	6 pin	5	Blue/White	(+)	Immobiliser	A
			Immobiliser LIN	~	Gray	6 pin	3	Gray	(DATA)	Immobiliser	A
			Brake	~	~	~	~	Purple/White	(+)	Driver kick panel	C
			CanH	~	~	~	~	Gray/Orange	(DATA)	Driver kick panel	C
			CanL	~	~	~	~	Purple/Orange	(DATA)	Driver kick panel	C
			Ignition	~	~	~	~	Blue/Red	(+)	Driver kick panel	C
	Trunk LIN	~	Black	6 pin	6	Green/Purple	(DATA)	Behind parking light switch assembly	B		
	V70 PTS	08-11	12V	~	Gray	6 pin	1	Red	(+)	Immobiliser	A
			Ground	~	Gray	6 pin	2	Black	(-)	Immobiliser	A
			PTS	~	Gray	6 pin	5	Blue/White	(+)	Immobiliser	A
			Immobiliser LIN	~	Gray	6 pin	3	Gray	(DATA)	Immobiliser	A
			Brake	~	~	~	~	Purple/White	(+)	Driver kick panel	C
			CanH	~	~	~	~	Gray/Orange	(DATA)	Driver kick panel	C
			CanL	~	~	~	~	Purple/Orange	(DATA)	Driver kick panel	C
			Ignition	~	~	~	~	Blue/Red	(+)	Driver kick panel	C
	Trunk LIN	~	Black	6 pin	6	Green/Purple	(DATA)	Behind parking light switch assembly	B		
	XC60 PTS	10-11	12V	~	Gray	6 pin	1	Red	(+)	Immobiliser	A
			Ground	~	Gray	6 pin	2	Black	(-)	Immobiliser	A
			PTS	~	Gray	6 pin	5	Blue/White	(+)	Immobiliser	A
			Immobiliser LIN	~	Gray	6 pin	3	Gray	(DATA)	Immobiliser	A
			Brake	~	~	~	~	Purple/White	(+)	Driver kick panel	C
			CanH	~	~	~	~	Gray/Orange	(DATA)	Driver kick panel	C
			CanL	~	~	~	~	Purple/Orange	(DATA)	Driver kick panel	C
			Ignition	~	~	~	~	Blue/Red	(+)	Driver kick panel	C
	Trunk LIN	~	Black	6 pin	6	Green/Purple	(DATA)	Behind parking light switch assembly	B		
	S80 PTS	07-11	12V	~	Gray	6 pin	1	Red	(+)	Immobiliser	A
			Ground	~	Gray	6 pin	2	Black	(-)	Immobiliser	A
			PTS	~	Gray	6 pin	5	Blue/White	(+)	Immobiliser	A
			Immobiliser LIN	~	Gray	6 pin	3	Gray	(DATA)	Immobiliser	A
			Brake	~	~	~	~	Purple/White	(+)	Driver kick panel	C
CanH			~	~	~	~	Gray/Orange	(DATA)	Driver kick panel	C	
CanL			~	~	~	~	Purple/Orange	(DATA)	Driver kick panel	C	
Ignition			~	~	~	~	Blue/Red	(+)	Driver kick panel	C	
Trunk LIN	~	Black	6 pin	6	Green/Purple	(DATA)	Behind parking light switch assembly	B			

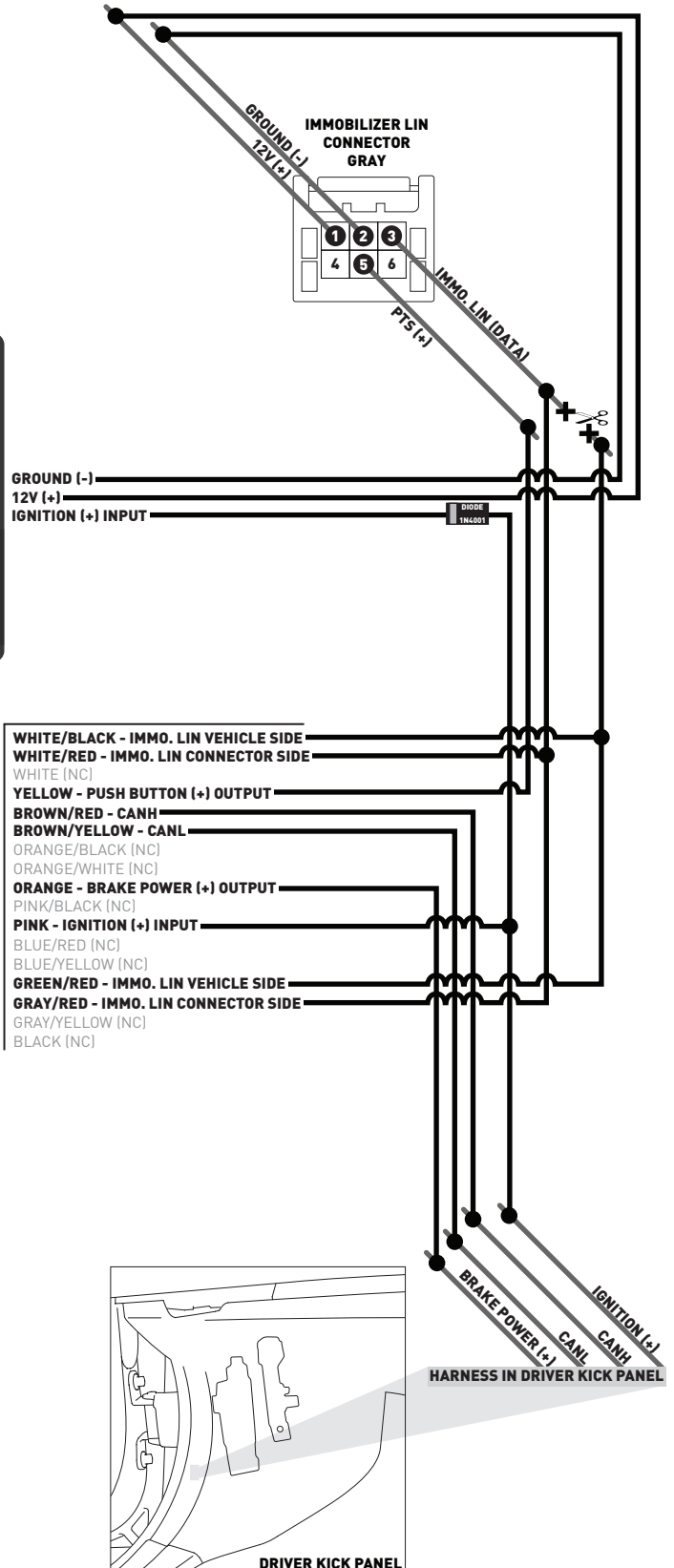
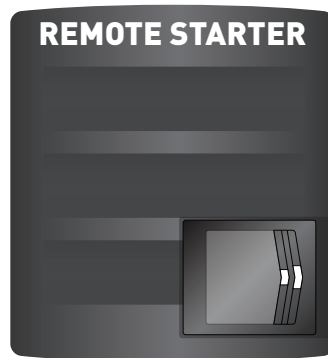
## TYPE 1 - WIRING DIAGRAM



## TYPE 2 - WIRE CROSS REFERENCE CHART - 1 OF 1

MAKE	MODEL	YEAR	WIRE DESCRIPTION	CONNECTOR NAME	CONNECTOR COLOR	CONNECTOR TYPE	POSITION	WIRE COLOR	POLARITY	MODULE LOCATION	COMPONENT LOCATOR
LAND ROVER	LR2 PTS	07-12	12V	~	Gray	6 pin	1	Blue/Red	(+)	Immobiliser	A
			Ground	~	Gray	6 pin	2	Black/Purple	(-)	Immobiliser	A
			PTS	~	Gray	6 pin	5	Blue/Gray	(+)	Immobiliser	A
			Immobiliser LIN	~	Gray	6 pin	3	White/Green	[DATA]	Immobiliser	A
			Brake	~	~	~	~	Purple/Brown	(+)	Driver kick panel	C
			CanH	~	~	~	~	Gray/Orange	[DATA]	Driver kick panel	C
			CanL	~	~	~	~	Purple/Orange	[DATA]	Driver kick panel	C
			Ignition	~	~	~	~	Purple	(+)	Driver kick panel	C

## TYPE 2 - WIRING DIAGRAM

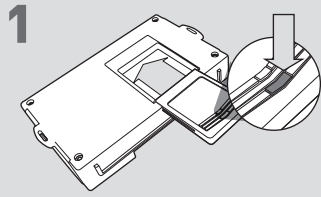


**\*BLADE CONNECTOR EXACT PIN-OUT**

WHITE/RED	10	20	WHITE/BLACK
WHITE	09	19	NO WIRE
PINK/BLACK	08	18	PINK
NO WIRE	07	17	BLACK
BROWN/RED	06	16	BROWN/YELLOW
ORANGE/BLACK	05	15	ORANGE/WHITE
ORANGE	04	14	NO WIRE
BLUE/RED	03	13	BLUE/YELLOW
GREEN/RED	02	12	YELLOW
GRAY/RED	01	11	GRAY/YELLOW

- WHITE/BLACK - IMMO. LIN VEHICLE SIDE
- WHITE/RED - IMMO. LIN CONNECTOR SIDE
- WHITE (NC)
- YELLOW - PUSH BUTTON (+) OUTPUT
- BROWN/RED - CANH
- BROWN/YELLOW - CANL
- ORANGE/BLACK (NC)
- ORANGE/WHITE (NC)
- ORANGE - BRAKE POWER (+) OUTPUT
- PINK/BLACK (NC)
- PINK - IGNITION (+) INPUT
- BLUE/RED (NC)
- BLUE/YELLOW (NC)
- GREEN/RED - IMMO. LIN VEHICLE SIDE
- GRAY/RED - IMMO. LIN CONNECTOR SIDE
- GRAY/YELLOW (NC)
- BLACK (NC)

## CARTRIDGE INSTALLATION

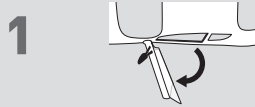


1 Slide cartridge into unit. Notice button under LED.

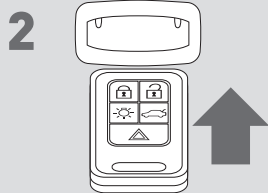
2

Ready for Module Programming Procedure.

## MODULE PROGRAMMING PROCEDURE - WITH KLON - 1 OF 2



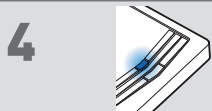
1 Open driver door.



2 Insert keyfob 1 in keyport.



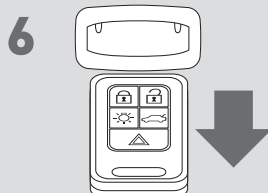
3 Press and hold start button to ON position.



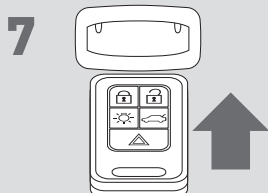
4 Wait, LED will turn solid BLUE. (This may take up to 10 seconds)



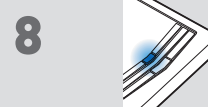
5 Push start button once [1x] to OFF position.



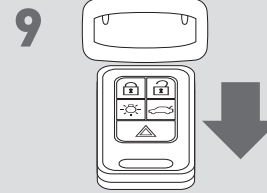
6 Remove keyfob 1 from keyport.



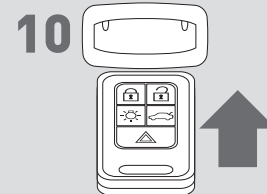
7 Insert keyfob 1 in keyport.



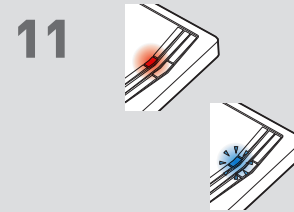
8 Wait, LED will turn solid BLUE.



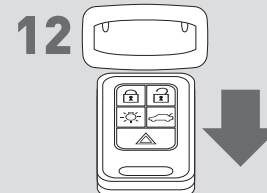
9 Remove keyfob 1 from keyport.



10 Insert keyfob 1 in keyport.



11 Wait, LED will turn solid RED then will flash BLUE rapidly.



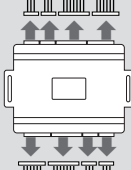
12 Remove keyfob 1 from keyport.

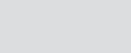



**IMPORTANT: READ NEXT PAGE !**




## MODULE PROGRAMMING PROCEDURE - WITH KLON - 2 OF 2

**13**  Disconnect all connectors from remote starter except the power connector.

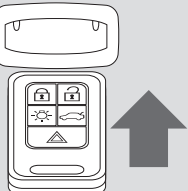
**14**  Disconnect the power connector.

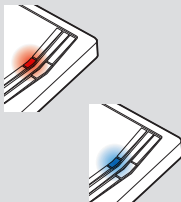
**15**  Remove remote starter from vehicle.

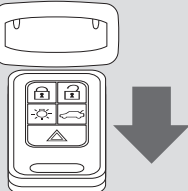
**16**  Connect remote starter to computer.

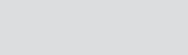
**17**  Proceed with extended programming.

**18**  Connect remote starter to vehicle.

**19**  Insert keyfob 1 in keyport.

**20**  Wait, LED will turn solid RED then will turn solid BLUE for 2 seconds.

**21**  Remove keyfob 1 from keyport.

**22**  Module Programming Procedure completed.

## IDENTIFY VEHICLE YEAR

**1** Locate the Vehicle Identification Number (VIN), identify the 10th character then match it to its corresponding year.



A	1980	L	1990	Y	2000	A	2010
B	1981	M	1991	1	2001	B	2011
C	1982	N	1992	2	2002	C	2012
D	1983	P	1993	3	2003	D	2013
E	1984	R	1994	4	2004	E	2014
F	1985	S	1995	5	2005	F	2015
G	1986	T	1996	6	2006	G	2016
H	1987	V	1997	7	2007	H	2017
J	1988	W	1998	8	2008	J	2018
K	1989	X	1999	9	2009	K	2019

## MODULE DIAGNOSTICS

LED STATUS		DIAGNOSTICS		
		DURING PROGRAMMING	DURING REMOTE START	WITH IGNITION OFF
	Flashing RED	Missing/wrong information from firmware or vehicle	Incorrectly programmed	Incorrectly programmed or connected
	Solid RED	Waiting for more vehicle information	Incorrectly programmed	Not programmed waiting for more vehicle information
	Flashing BLUE	Additional steps required to complete programming	Correctly programmed and operational	False ground when running status from remote starter
	Solid BLUE then OFF	Correctly programmed	Reset in progress	Reset in progress
	OFF	No activity or already programmed	Invalid ground when running status from remote starter	At rest and ready for a remote start sequence

## FACTORY RESET PROCEDURE

- DISCONNECT** cartridge from remote starter.
- PRESS AND HOLD** programming button while re-connecting cartridge to remote starter.

- LED will flash red. Immediately **RELEASE** programming button.
- LED will turn solid red for 2 seconds.  
**RESET COMPLETED.**
- RECONNECT** all connectors. Repeat programming procedure.

**!** Failure to follow procedure may result with a DTC or a CHECK ENGINE error message.

## TAKE OVER PROCEDURE - TO THE VEHICLE OWNER

### NOTE

- I All vehicle doors must be closed and locked prior to remote start sequence.

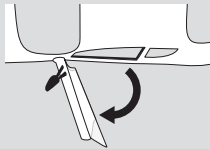
 **TIME RESTRICTION COMING UP !**

1



Press UNLOCK on after-market remote.

2

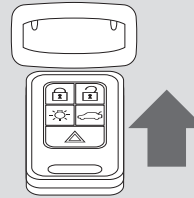


### TIME RESTRICTION

Within 45 SECONDS from previous step:

Open vehicle door.  
Enter vehicle.

3



Insert keyfob in keyport.

4



Press and release BRAKE pedal.

5

Take over procedure completed.



Failure to follow procedure within time restriction will result in vehicle engine shutdown.