

BLADE

SERIES

Automotive Data Solutions Inc.

INSTALL GUIDE

BLADE-AL(DL)-HA1-EN

HA1

AVAILABLE FOR: ADS-BLADE AL

Rev. Date: November 07, 2017

Doc. No.: ##45588##

U.S. PATENT NO. 8,856,780

PLEASE VISIT WWW.IDATALINK.COM FOR COMPLETE PRODUCT DETAILS

The brand names and logos found in this guide are property of their respective owners. Automotive Data Solutions Inc. © 2017

ACURA

HONDA

NOTICE: The manufacturer will accept no responsibility for any electrical damage resulting from improper installation of this product, be that either damage to the vehicle itself or to the installed device. This device must be installed by a certified technician. This guide has been written for properly trained technicians; a certain level of skill & knowledge is therefore assumed. Please review the Installation Guide carefully before beginning any work.

INSTALL TYPE SELECTION

MAKE	MODEL	YEAR	INSTALL TYPE	FEATURES															
				DATA IMMOBILIZER BYPASS	ARM OEM ALARM	DISARM OEM ALARM	DOOR LOCK	DOOR UNLOCK	TRUNK/HATCH RELEASE	POWER LIFTGATE	POWER SLIDING DOOR (L)	POWER SLIDING DOOR (R)	DOOR STATUS OUTPUT	TRUNK STATUS OUTPUT	HOOD STATUS OUTPUT**	TACHOMETER OUTPUT	E-BRAKE OUTPUT	A/M ALARM CTRL FROM OEM REMOTES	A/M RS CTRL FROM OEM REMOTES
ACURA	EL 1.7	01-05	2	•	•	•	•	•	•										
	RSX	02-06	2	•	•	•	•	•	•										
	TL	04-08	3	•	•	•	•	•	•				•	•	•	•	•	•	•
	TSX	04-08	1	•	•	•	•	•	•				•	•	•	•	•	•	•
HONDA	Accord / Hybrid	03-07	1	•	•	•	•	•	•				•	•	•	•	•	•	•
	Civic / Hybrid	01-05	2	•	•	•	•	•	•										
	CR-V	02-06	2	•	•	•	•	•											
	Element	03-11	2	•	•	•	•	•											
	Odyssey	05-10	1	•	•	•	•	•		•	•	•	•	•	•	•	•	•	•
	Ridgeline	06-14	1	•	•	•	•	•					•	•	•	•	•	•	•

*This feature will unlock then lock the vehicle's doors on RS shutdown. To turn it off, deactivate the RAP shutdown.

**Available only if vehicle is equipped with factory hood switch.

WARNING: READ CAREFULLY**IMPORTANT**

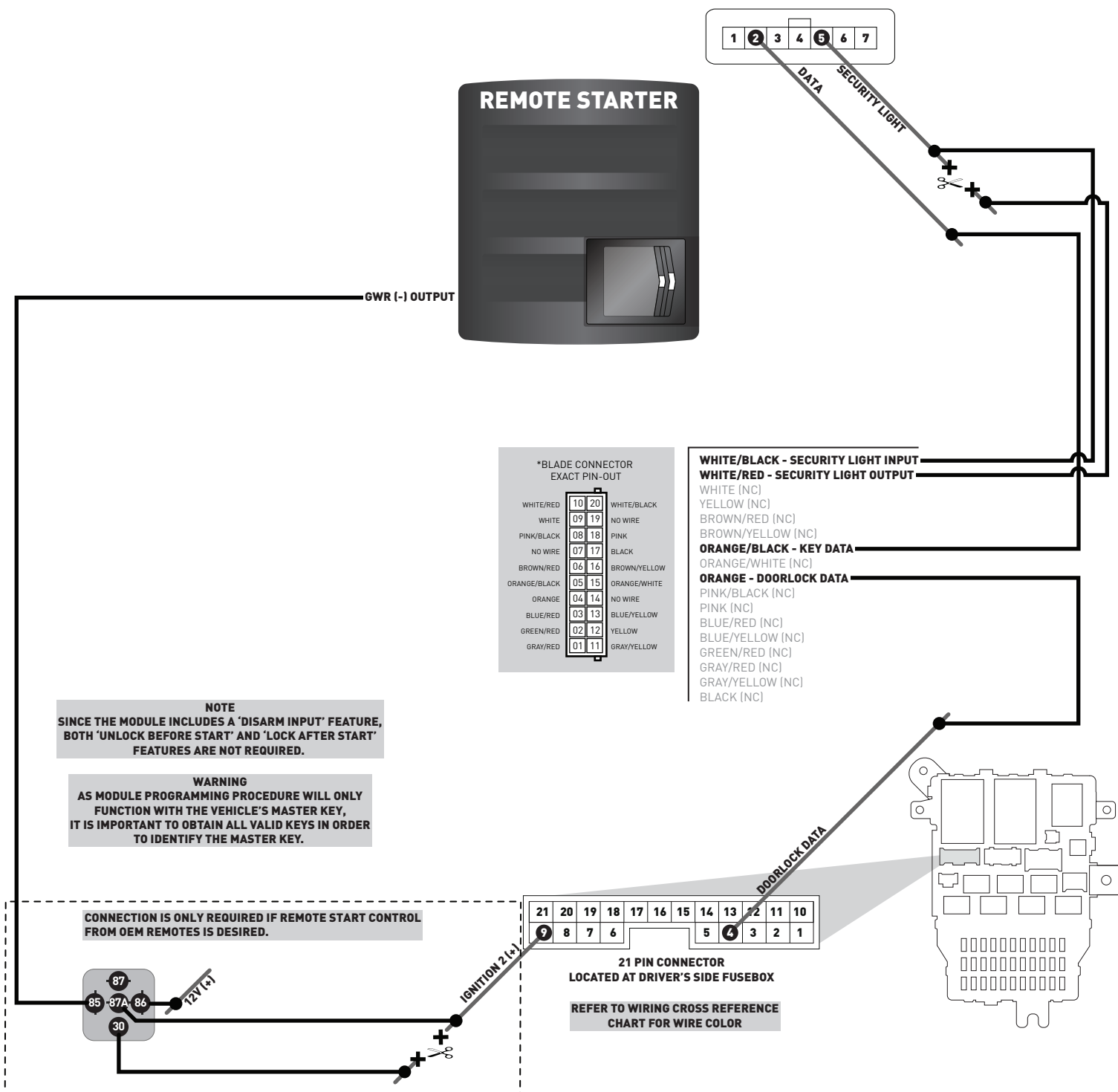
- I Ground When Running from Remote Starter must be provided BEFORE Ignition.
Failure to comply may result in immobilizer bypass malfunction during remote start.
- II If Ground When Running from Remote Starter CAN'T be provided BEFORE Ignition, use a separate TB-HA for immobilizer bypass ONLY.
- III
 - DO NOT program unlock before start on the Remote Starter.
 - DO NOT change Remote Starter OEM alarm control default settings.Failure to comply may result in product malfunction.

TYPE 1 - WIRE CROSS REFERENCE CHART

MAKE	MODEL	YEAR	WIRE DESCRIPTION	CONNECTOR NAME	CONNECTOR COLOR	CONNECTOR TYPE	POSITION	WIRE COLOR	POLARITY	MODULE LOCATION	COMPONENT LOCATOR
ACURA	TSX	04-05	Ignition 1	~	White	7 pin	6	Black/Yellow	(+)	Ignition switch	~
			Ignition 2	~	Green	21 pin	9	Yellow	(+)	Dash fuse box, driver side	~
			Data	~	White	7 pin	2	Red/Blue	(DATA)	Ignition switch	~
			Security Light	~	White	7 pin	5	Blue/Orange	(-)	Ignition switch	~
			Doorlock Data	~	Green	21 pin	4	Brown/Red	(DATA)	Dash fuse box, driver side	~
	TSX	06-08	Ignition	~	White	7 pin	6	Black/Yellow	(+)	Ignition switch	~
			Ignition 2	~	Green	21 pin	9	Yellow	(+)	Dash fuse box, driver side	~
			Data	~	White	7 pin	2	Red	(DATA)	Ignition switch	~
			Security Light	~	White	7 pin	5	Orange	(-)	Ignition switch	~
			Doorlock Data	~	Green	21 pin	4	Brown/Red	(DATA)	Dash fuse box, driver side	~
HONDA	Accord	03-07	Ignition	~	White	7 pin	6	Black/Yellow	(+)	Ignition switch	~
			Ignition 2	~	Green	21 pin	9	Yellow	(+)	Dash fuse box, driver side	~
			Data	~	White	7 pin	2	Red/Blue	(DATA)	Ignition switch	~
			Security Light	~	White	7 pin	5	Blue/Orange	(-)	Ignition switch	~
			Doorlock Data	~	Green	21 pin	4	Brown/Red	(DATA)	In driver door harness	~
	Accord Hybrid	05	Ignition	~	White	7 pin	6	Black/Yellow	(+)	Ignition switch	~
			Ignition 2	~	Green	21 pin	9	Yellow	(+)	Dash fuse box, driver side	~
			Data	~	White	7 pin	2	Yellow	(DATA)	Ignition switch	~
			Security Light	~	White	7 pin	5	Red	(-)	Ignition switch	~
			Doorlock Data	~	~	21 pin	4	LtGreen	(DATA)	Dash fuse box, driver side	~
	Accord Hybrid	06-07	Ignition	~	White	7 pin	6	Black/Yellow	(+)	Ignition switch	~
			Ignition 2	~	Green	21 pin	9	Yellow	(+)	Dash fuse box, driver side	~
			Data	~	White	7 pin	2	Yellow	(DATA)	Ignition switch	~
			Security Light	~	White	7 pin	5	Red	(-)	Ignition switch	~
			Doorlock Data	~	Green	21 pin	4	Brown/Red	(DATA)	Dash fuse box, driver side	~
	Odyssey	05-10	Ignition	~	Green	7 pin	6	Black/Yellow	(+)	Ignition switch	~
			Ignition 2	~	Green	21 pin	9	Yellow	(+)	Dash fuse box, driver side	~
			Data	~	Green	7 pin	2	Red/Blue	(DATA)	Ignition switch	~
			Security Light	~	Green	7 pin	5	Blue/Orange	(-)	Ignition switch	~
			Doorlock Data	~	Green	21 pin	4	Green/Red	(DATA)	In driver door harness	~
Ridgeline	06-14	Ignition	~	Green	7 pin	6	Black/Green	(+)	Ignition switch	~	
		Ignition 2	~	Green	21 pin	9	Yellow	(+)	Dash fuse box, driver side	~	
		Data	~	Green	7 pin	2	Red/Blue	(DATA)	Ignition switch	~	
		Security Light	~	Green	7 pin	5	Blue/Orange	(-)	Ignition switch	~	
		Doorlock Data	~	Green	21 pin	4	Brown/Black	(DATA)	Dash fuse box, driver side	~	

TYPE 1 - WIRING DIAGRAM

STANDARD 12 VOLT, GROUND AND IGNITION SWITCH CONNECTIONS ARE STILL REQUIRED FROM THE REMOTE STARTER.

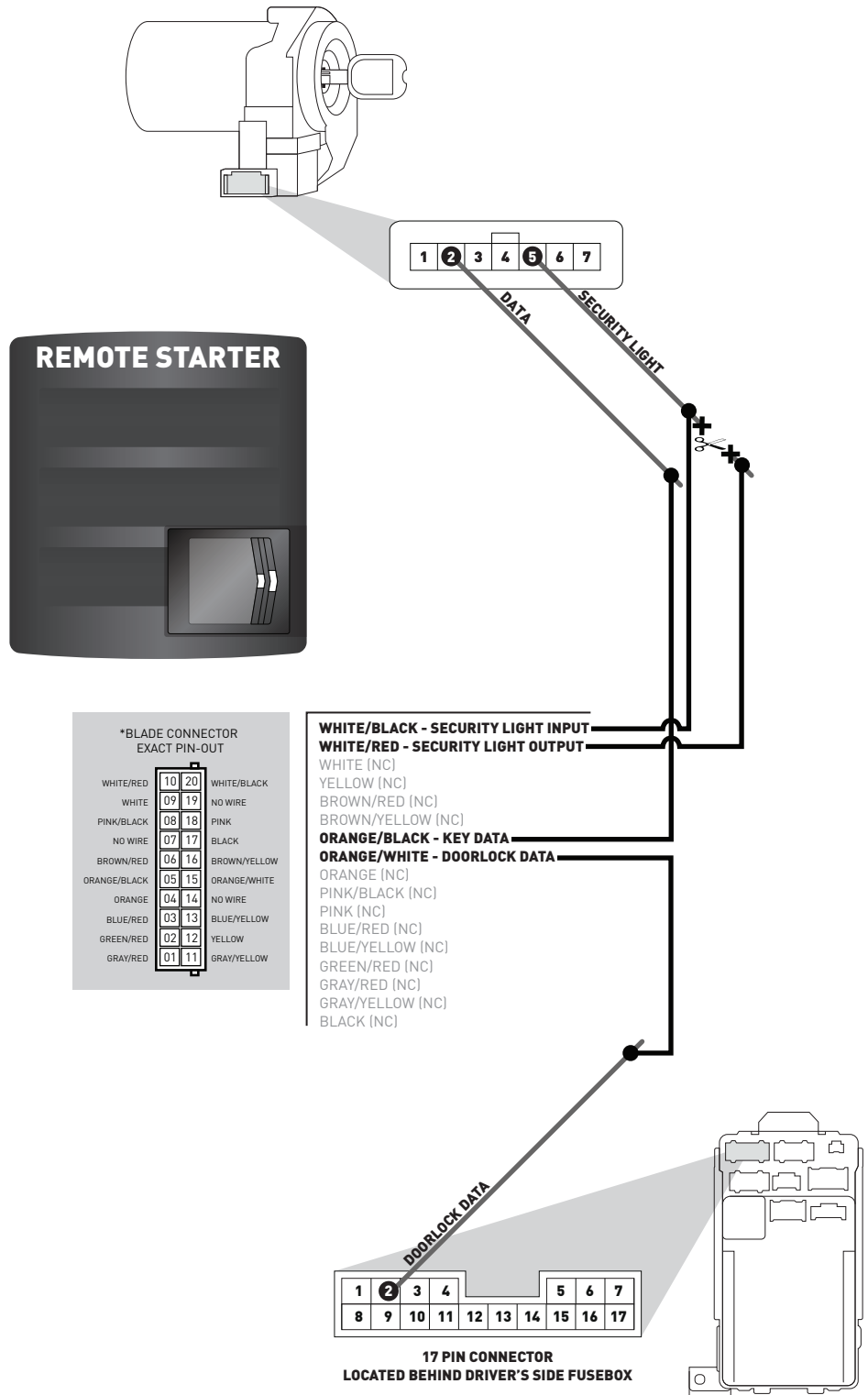


TYPE 2 - WIRE CROSS REFERENCE CHART

MAKE	MODEL	YEAR	WIRE DESCRIPTION	CONNECTOR NAME	CONNECTOR COLOR	CONNECTOR TYPE	POSITION	WIRE COLOR	POLARITY	MODULE LOCATION	COMPONENT LOCATOR
ACURA	RSX	01-03	Ignition	~	Green	7 pin	6	Yellow/Black	(+)	Ignition switch	~
			Data	~	Green	7 pin	2	Red/Blue	(DATA)	Ignition switch	~
			Security Light	~	Green	7 pin	5	Blue/Orange	(-)	Ignition switch	~
			Doorlock Data	K	~	17 pin	2	Blue/Orange	(DATA)	Top of driver side fuse box	~
	RSX	04-06	Ignition	~	Green	7 pin	6	Black/Yellow	(+)	Ignition switch	~
			Data	~	Green	7 pin	2	Red/Blue	(DATA)	Ignition switch	~
			Security Light	~	Green	7 pin	5	Blue/Orange	(-)	Ignition switch	~
			Doorlock Data	K	~	17 pin	2	Blue/Orange	(DATA)	Top of driver side fuse box	~
	EL 1.7	01-05	Ignition	~	Green	7 pin	6	Yellow/Black	(+)	Ignition switch	~
			Data	~	Green	7 pin	2	Red/Blue	(DATA)	Ignition switch	~
			Security Light	~	Green	7 pin	5	Blue/Orange	(-)	Ignition switch	~
			Doorlock Data	K	~	17 pin	2	Blue/Orange	(DATA)	Top of driver side fuse box	~
HONDA	Civic/ Civic Hybrid	01-05	Ignition	~	Green	7 pin	6	Yellow/Black	(+)	Ignition switch	~
			Data	~	Green	7 pin	2	Red/Blue	(DATA)	Ignition switch	~
			Security Light	~	Green	7 pin	5	Blue/Orange	(-)	Ignition switch	~
			Doorlock Data	K	~	17 pin	2	Blue/Orange	(DATA)	Top of driver side fuse box	~
	CR-V	02-04	Ignition	~	Green	7 pin	6	Yellow/Black	(+)	Ignition switch	~
			Data	~	Green	7 pin	2	White	(DATA)	Ignition switch	~
			Security Light	~	Green	7 pin	5	Blue/Orange	(-)	Ignition switch	~
			Doorlock Data	K	~	17 pin	2	Blue/Orange	(DATA)	Top of driver side fuse box	~
	CR-V	05-06	Ignition	~	Green	7 pin	6	Black/Yellow	(+)	Ignition switch	~
			Data	~	Green	7 pin	2	White	(DATA)	Ignition switch	~
			Security Light	~	Green	7 pin	5	Blue/Orange	(-)	Ignition switch	~
			Doorlock Data	K	~	17 pin	2	Blue/Orange	(DATA)	Top of driver side fuse box	~
	Element	03-11	Ignition	~	Green	7 pin	6	Black/Yellow	(+)	Ignition switch	~
			Data	~	Green	7 pin	2	White	(DATA)	Ignition switch	~
			Security Light	~	Green	7 pin	5	Blue/Orange	(-)	Ignition switch	~
			Doorlock Data	K	~	17 pin	2	Blue/Orange	(DATA)	Top of driver side fuse box	~

TYPE 2 - WIRING DIAGRAM

STANDARD 12 VOLT, GROUND AND IGNITION SWITCH CONNECTIONS ARE STILL REQUIRED FROM THE REMOTE STARTER.



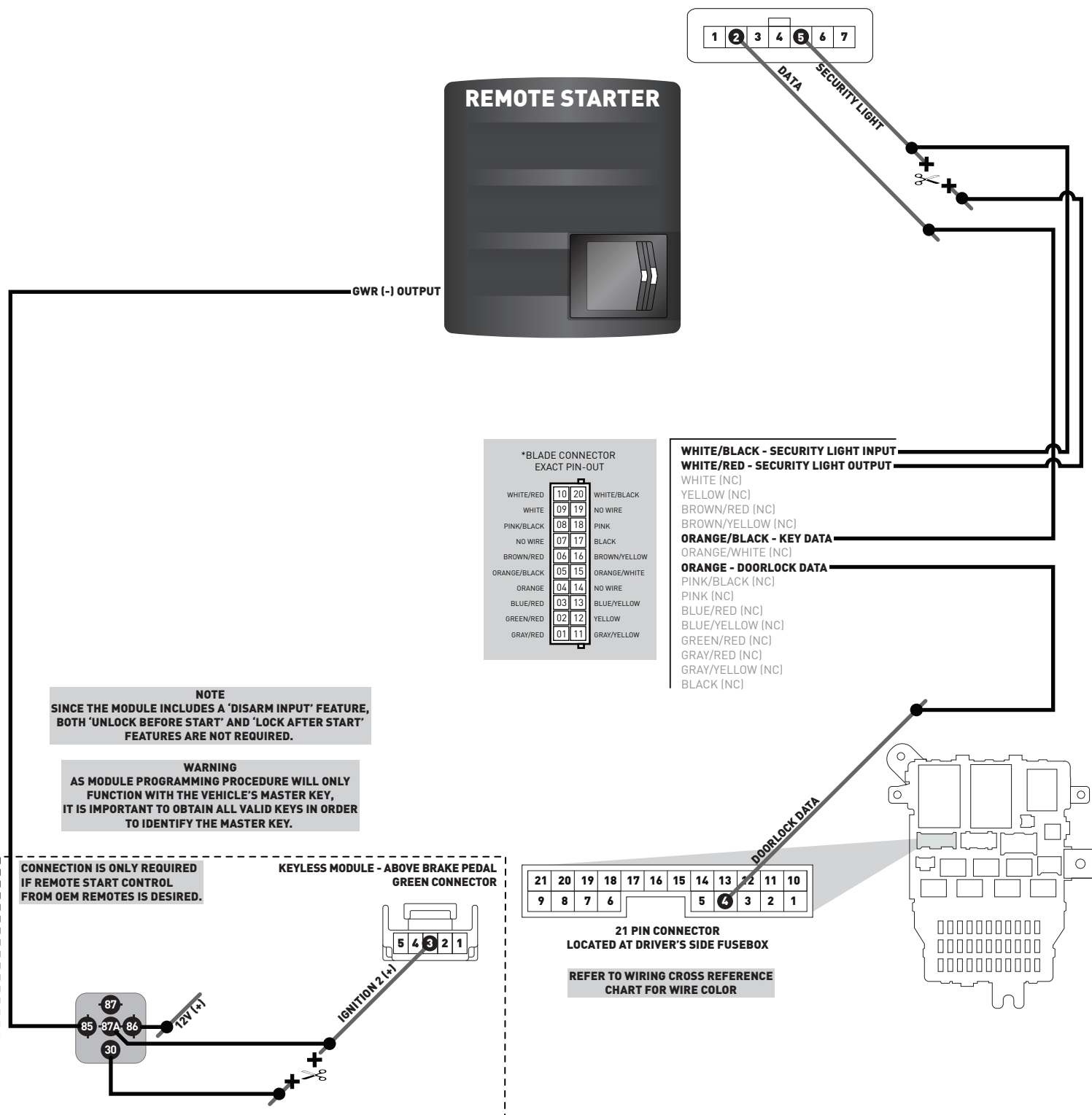
WARNING
 AS MODULE PROGRAMMING PROCEDURE WILL ONLY FUNCTION WITH THE VEHICLE'S MASTER KEY, IT IS IMPORTANT TO OBTAIN ALL VALID KEYS IN ORDER TO IDENTIFY THE MASTER KEY.

TYPE 3 - WIRE CROSS REFERENCE CHART

MAKE	MODEL	YEAR	WIRE DESCRIPTION	CONNECTOR NAME	CONNECTOR COLOR	CONNECTOR TYPE	POSITION	WIRE COLOR	POLARITY	MODULE LOCATION	COMPONENT LOCATOR
ACURA	TL	04-06	Ignition 1	~	White	7 pin	6	Black/Green	(+)	Ignition switch	~
			Ignition 2	~	Green	5 pin	3	Yellow	(+)	Keyless module, above brake pedal	~
			Data	~	White	7 pin	2	Red/Blue	(DATA)	Ignition switch	~
			Security Light	~	White	7 pin	5	Blue/Orange	(-)	Ignition switch	~
			Doorlock Data	~	Green	21 pin	4	Brown/Black	(DATA)	Dash fuse box, driver side	~
	TL	07-08	Ignition 1	~	White	7 pin	6	Black/Green	(+)	Ignition switch	~
			Ignition 2	~	Green	5 pin	3	Yellow	(+)	Keyless module, above brake pedal	~
			Data	~	White	7 pin	2	Yellow	(DATA)	Ignition switch	~
			Security Light	~	White	7 pin	5	Orange	(-)	Ignition switch	~
			Doorlock Data	~	Green	21 pin	4	Brown/Black	(DATA)	Dash fuse box, driver side	~

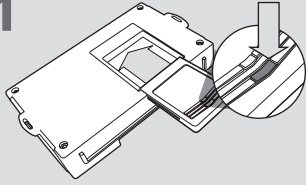
TYPE 3 - WIRING DIAGRAM

STANDARD 12 VOLT, GROUND AND IGNITION SWITCH CONNECTIONS ARE STILL REQUIRED FROM THE REMOTE STARTER.



CARTRIDGE INSTALLATION

1



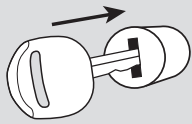
Slide cartridge into unit. Notice button under LED.

2

Ready for Module Programming Procedure.

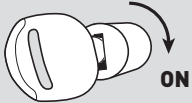
MODULE PROGRAMMING PROCEDURE

1



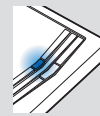
Insert key into ignition.

2



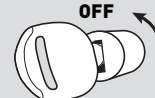
Turn key to ON position.

3



Wait, LED will turn solid BLUE for **2 seconds**.

4



Turn key to OFF position.

5

Module Programming Procedure completed.

IDENTIFY VEHICLE YEAR

1 Locate the Vehicle Identification Number (VIN), identify the 10th character then match it to its corresponding year.



A	1980	L	1990	Y	2000	A	2010
B	1981	M	1991	1	2001	B	2011
C	1982	N	1992	2	2002	C	2012
D	1983	P	1993	3	2003	D	2013
E	1984	R	1994	4	2004	E	2014
F	1985	S	1995	5	2005	F	2015
G	1986	T	1996	6	2006	G	2016
H	1987	V	1997	7	2007	H	2017
J	1988	W	1998	8	2008	J	2018
K	1989	X	1999	9	2009	K	2019

MODULE DIAGNOSTICS

LED STATUS		DIAGNOSTICS		
		DURING PROGRAMMING	DURING REMOTE START	WITH IGNITION OFF
	Flashing RED	Missing/wrong information from firmware or vehicle	Incorrectly programmed	Incorrectly programmed or connected
	Solid RED	Waiting for more vehicle information	Incorrectly programmed	Not programmed waiting for more vehicle information
	Flashing BLUE	Additional steps required to complete programming	Correctly programmed and operational	False ground when running status from remote starter
	Solid BLUE then OFF	Correctly programmed	Reset in progress	Reset in progress
	OFF	No activity or already programmed	Invalid ground when running status from remote starter	At rest and ready for a remote start sequence

FACTORY RESET PROCEDURE

- DISCONNECT** cartridge from remote starter.
- PRESS AND HOLD** programming button while re-connecting cartridge to remote starter.

- LED will flash red. Immediately **RELEASE** programming button.
- LED will turn solid red for 2 seconds.
RESET COMPLETED.
- RECONNECT** all connectors. Repeat programming procedure.

! Failure to follow procedure may result with a DTC or a CHECK ENGINE error message.