

PRODUCT GUIDE

FT-DC2-AS



DOCUMENT NUMBER

REVISION DATE
20190702

NOTICE

The manufacturer will accept no responsibility for any electrical damage resulting from improper installation of this product, be that either damage to the vehicle itself or to the installed device. This device must be installed by a certified technician. Please review the Installation Guide carefully before beginning any work.

WELCOME

Congratulations on the purchase of your FT-DC2 solution. You are now a few simple steps away from enjoying your new remote starter unit with enhanced features.

Before starting your installation, please ensure that your FT-DC2 module is programmed with the correct firmware for your vehicle and that you carefully review the install guide.

TABLE OF CONTENTS

Box Contents	3
Tach Programming Procedure	4
Remote Programming Procedure	5
Valet Mode Programming Procedure	6
Compatible Accessories	7
Online Module Settings	9
Module Diagnostics	10
Remote Starter Error Codes	11
Module Reset Procedure	12

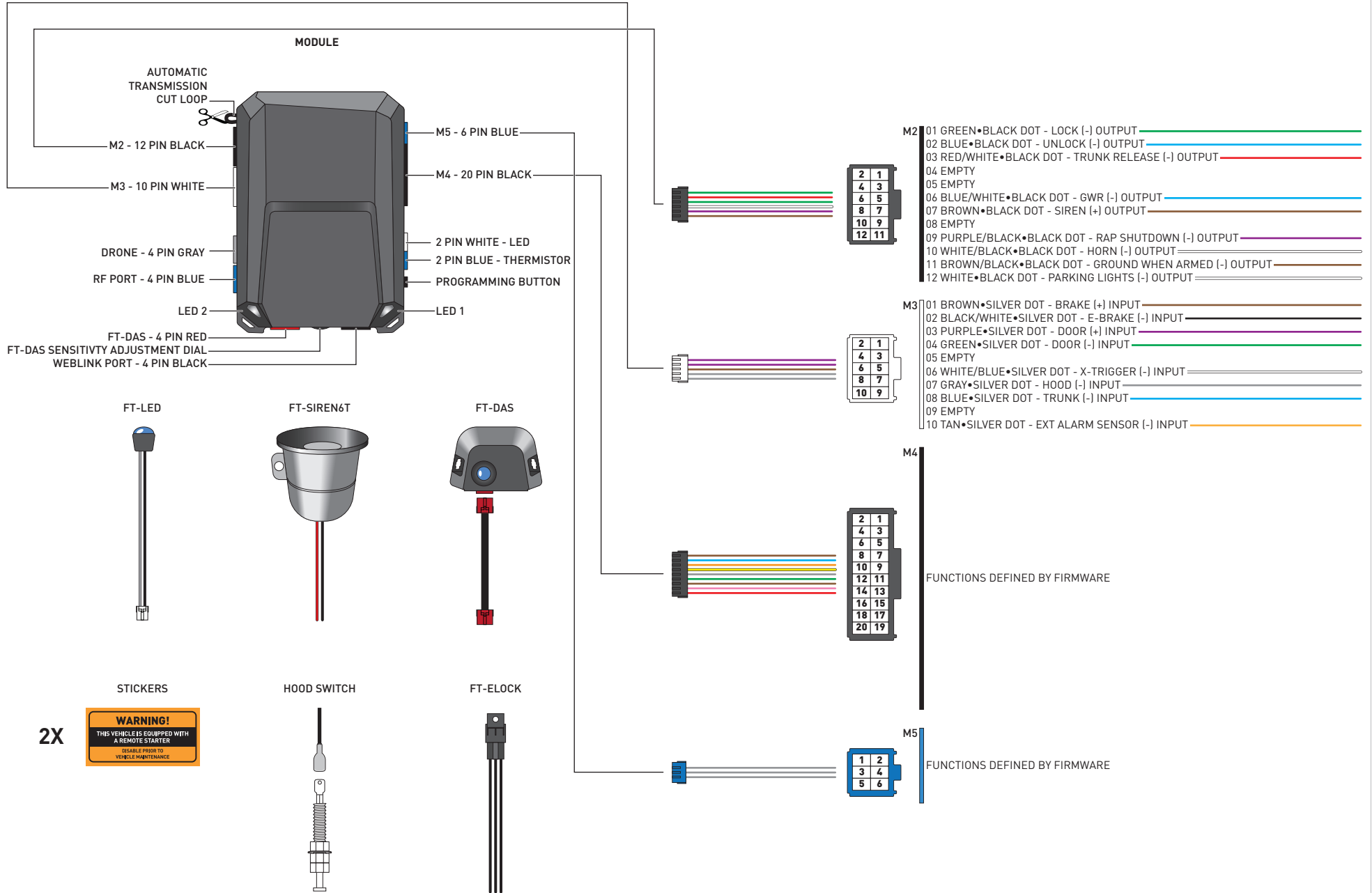
NEED HELP?

 **1 866 427-2999**

 **support@idatalink.com**

 **idatalink.com/support**
www.12voltdata.com/forum
www.facebook.com/groups/idatatech

BOX CONTENTS



01



START vehicle for 15 seconds.

02



Press and hold the brake pedal.

03



Press and release the module's programming button. (OR if the remotes are already programmed to the vehicle, press and hold the start button of the remote for 2.5 seconds.)

04



Wait, LED 2 will flash GREEN. (See the Module Diagnostics page)

05



Release the brake pedal.

06



Module Programming Procedure completed.

>>



WARNING: Program aftermarket remotes before usage. A maximum of four [4x] aftermarket remotes per system.

01



Time restriction. Complete next step within 7 seconds.

02



Cycle ignition ON five times [5x OFF/ON] rapidly.

03



Parking Light will flash once [1x].

04



Time restriction. Complete next step within 5 seconds from previous step.

05



Press once [1x] on LOCK button of aftermarket remote.

06



Parking Light will flash once [1x].

>>



To program additional remotes: repeat steps 4 to 6 using each additional remote.

07



Wait, Parking Light will flash twice [2x].

08



Turn ignition to OFF position.

09



Aftermarket Remote Programming Procedure completed.

>>



NOTE: In Valet Mode, the Remote starter is not functional. Keyless entry, Lock and Unlock will remain functional. See RF kit user manual for alternate valet mode programming.

01



Time restriction. Complete next step within 7 seconds.

02



Cycle ignition ON twice [2x OFF/ON] rapidly.

03



Press and release the BRAKE pedal three times [3x].

04



Parking Light will flash once [1x] then will flash twice [2x].

05



Set ignition to OFF position.

06



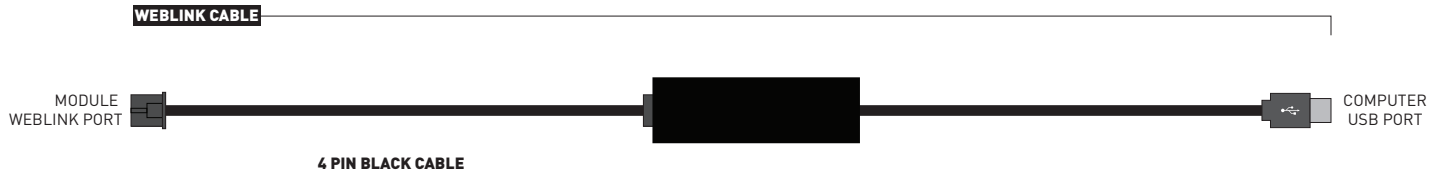
Valet Mode Programming Procedure completed.

>>

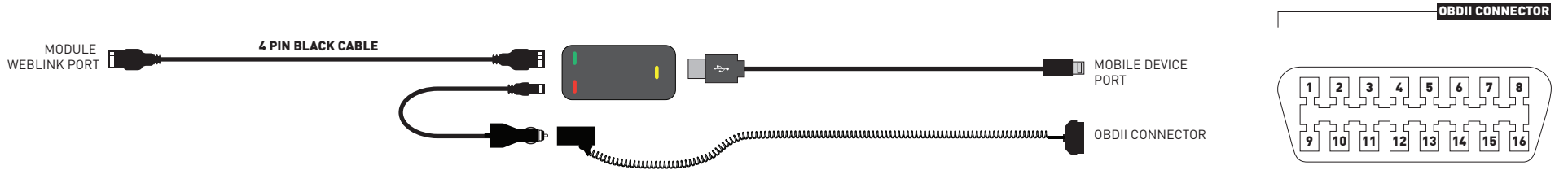


To exit valet mode: repeat steps 1 to 5.

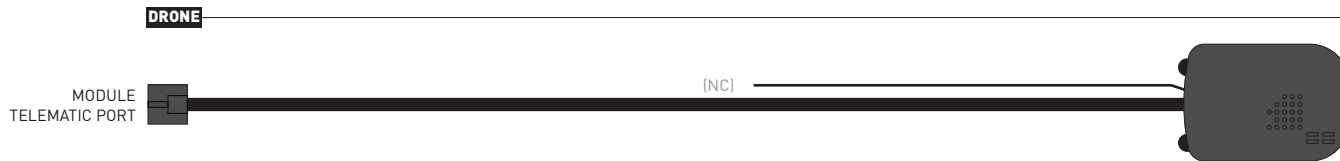
WEBLINK CABLE (required accessory sold separately)



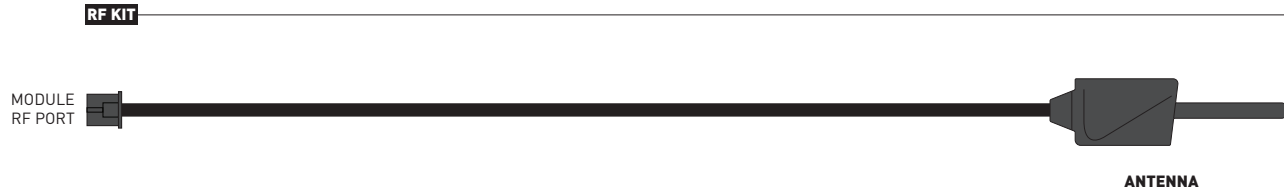
WEBLINK MOBILE (accessory sold separately)



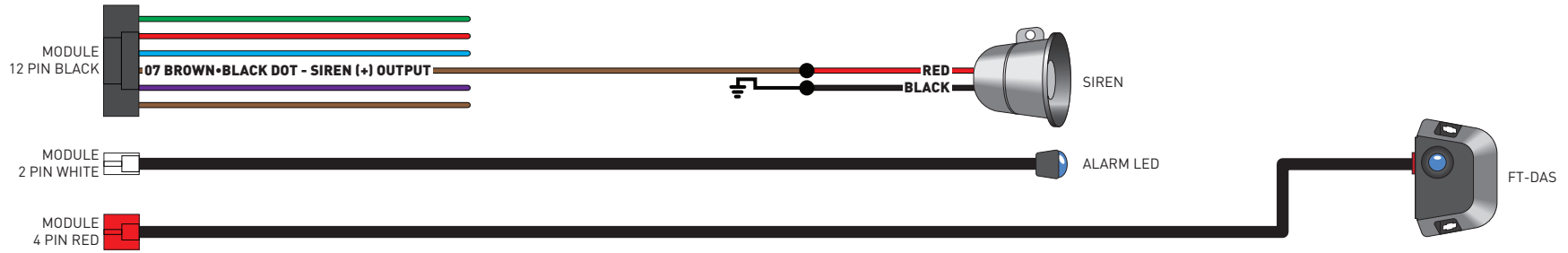
TELEMATIC KIT (accessory sold separately)



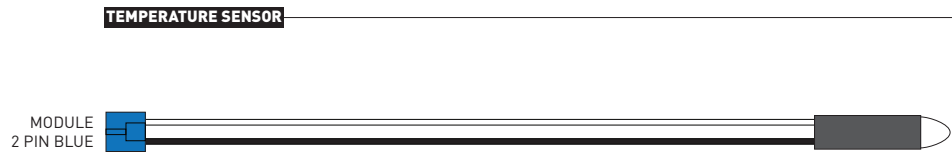
RF KIT (accessories sold separately)



ALARM KIT (included)



TEMPERATURE SENSOR (accessories sold separately)



WEB PROGRAMMABLE MENUS	DESCRIPTION
MENU 1 – Remote Starter	RS related configuration options
MENU 2 – Doorlock Options	Convenience feature configuration options
MENU 3 – Security Options	Alarm activation and settings
MENU 4 – AUX function assignments	Set transmitter AUX buttons controls
MENU 5 – Programmable outputs (POC)	Set actions for programmable outputs
MENU 6 – Pulse Timer Output Configuration (PTO)	Set duration for pulse timer outputs (if used)
MENU 7 – Input Configurations	Set inputs for Auto by firmware/Data/Analog
MENU 8 – Output Configurations	Set outputs for Auto by firmware/Data/Analog

Programming options are available through Weblink and Weblink Mobile only.

TEST MODULE		LED 1 STATUS	DIAGNOSTIC
I	DURING MODULE PROGRAMMING	Flashing RED	Missing/wrong information from firmware or vehicle.
		Solid RED	Module waiting for more vehicle information.
		Flashing GREEN	Additional steps required to complete module programming.
		Solid GREEN then OFF	Module correctly programmed.
		OFF	No activity or module already programmed.
II	DURING TACH PROGRAMMING	1 GREEN flash	Tach signal programmed in Analog
		2 GREEN flashes	Tach signal programmed in Data
		3 RED flashes	No tach signal detected
		4 RED flashes	System is in valet mode
		6 RED flashes	Tach set for 'assumed start'. No tach programming required
III	DURING REMOTE START	Flashing RED	Module incorrectly programmed.
		Solid RED	Module incorrectly programmed.
		Flashing GREEN	Module correctly programmed and operational.
		Solid GREEN then OFF	Reset in progress.
		OFF	Invalid ground when running status from remote starter.
IV	WITH IGNITION OFF	Flashing RED	Module incorrectly programmed or connected.
		Solid RED	Module not programmed. Waiting for more vehicle information.
		Flashing GREEN	False ground when running status from remote starter.
		Solid GREEN then OFF	Reset in progress.
		OFF	Module at rest and ready for a remote start sequence.

REMOTE STARTER ERROR CODES: NOTES	[X] NUMBER OF PARKING LIGHT FLASHES	DIAGNOSTIC
I WARNING: The following applies only when the parking lights are connected and supported by the system.	01	Engine running.
	02	Key in ignition at ON position.
II After a remote starter failure, the parking lights will flash three [3x] times, then will flash [X] number times to indicate an error code. See table.	03	Door is open.
	04	Trunk is open.
	05	Foot brake is ON.
	06	Hood is open.
	07	The reservation is OFF. (Manual transmission only)
	08	Tach failure.
	09	The vehicle is moving (VSS).
	10	System is in Valet Mode.
	11	CAN communication failure
	12	RS not synchronized. Start vehicle with OEM key for 15 sec before trying a new RS sequence.
	13	Bypass problem.

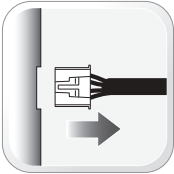
REMOTE STARTER SHUTDOWN ERROR CODES: NOTES	[Y] NUMBER OF PARKING LIGHT FLASHES	DIAGNOSTIC
I WARNING: The following applies only when the parking lights are connected and supported by the system.	01	Engine tach signal is lost.
	02	Emergency brake is lost.
II If the engine shuts down after a remote starter sequence: Press and hold the Trunk button and the Start button at the same time for 2.5 seconds when using a 1-WAY remote. OR Press once [1x] on button "4" when using a 2-WAY remote. The parking lights will flash four [4x] times, then will flash [Y] number times to indicate an error code. See table.	03	Foot brake is ON.
	04	Hood is open.
	05	Engine RPM limiter is ON.
	06	Glow plug timeout error.
	07	Vehicle is moving (VSS).
	08	N/A
	09	N/A
	10	Door is open.
	11	CAN communication failure during RS sequence.
	12	RS not synchronized. Start vehicle with OEM key for 15 sec before trying a new RS sequence.
	13	Takeover is not allowed.
	14	Shutdown error, board overheat protection.

>>



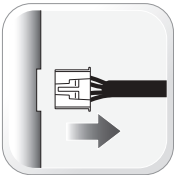
The following procedure resets the module programming to the vehicle. It does not reset any settings configured online.

01



Disconnect all connectors from module except the M1 BLACK 8-pin connector and the M4 BLACK 20-pin connector.

02



Disconnect the M1 BLACK 8-pin connector and the M4 BLACK 20-pin connector.

03



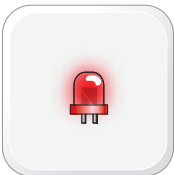
PRESS AND HOLD the module's programming button while connecting the M1 BLACK 8-pin connector and the M4 BLACK 20-pin connector.

04



Wait, LED 1 will flash RED. RELEASE programming button.

05



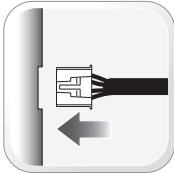
LED 1 will turn RED for 2 seconds.

06



Module RESET completed.

07



Reconnect all connectors.

08



Repeat programming procedure.

>>



Failure to follow procedure may result with a DTC or a CHECK ENGINE error message.